

VALLEY CENTRE

FOR RENT
SHOPS, OFFICES, MEDICAL SUITES
IN A RETAIL HUB

Craighall Park
Jan Smuts Avenue



Conveniently Located
on Jan Smuts Avenue











Recently Renovated Providing
Modern Office Spaces



Medical Suites Tailored
to Practice Requirements

Property Features

-  24 Shops
-  Office & Medical Suites
-  Generators
-  Backup Water Supply
-  Secure Underground Parking
-  Central Location
-  24 Hour Security
-  Craighall Park

For a more detailed description on
this property, please visit our website:
www.urbanrealestate.co.za

Retail Centre Details

Contact us to view our shop & office space and medical suites at the Valley Centre.

The Valley Centre is highly visible and ideally located on Jan Smuts Avenue, Craighall Park, Johannesburg. It is mere minutes from the business hubs of Hyde Park, Johannesburg, Sandton and Rosebank, allowing easy access for clients and business partners. [2.1km From Hyde Park Shopping Centre, 5.9km from Sandton Gautrain Station and 4.8km from Rosebank Gautrain station.]

The convenient integration of offices with a retail centre creates the ideal business location, while enhancing work-life balance. The Valley Centre comprises 24 shops [including Woolworth, Clicks, Fournos, PostNet, CrossFit gym and ATMs], with a Planet Fitness across the road.

The building has undergone extensive renovations to provide modern office spaces; in addition, the landlord will paint, partition into smaller suites, air-condition and carpet the offices to the tenant's specifications in accordance with the landlord's Tenant Installation Allowances.

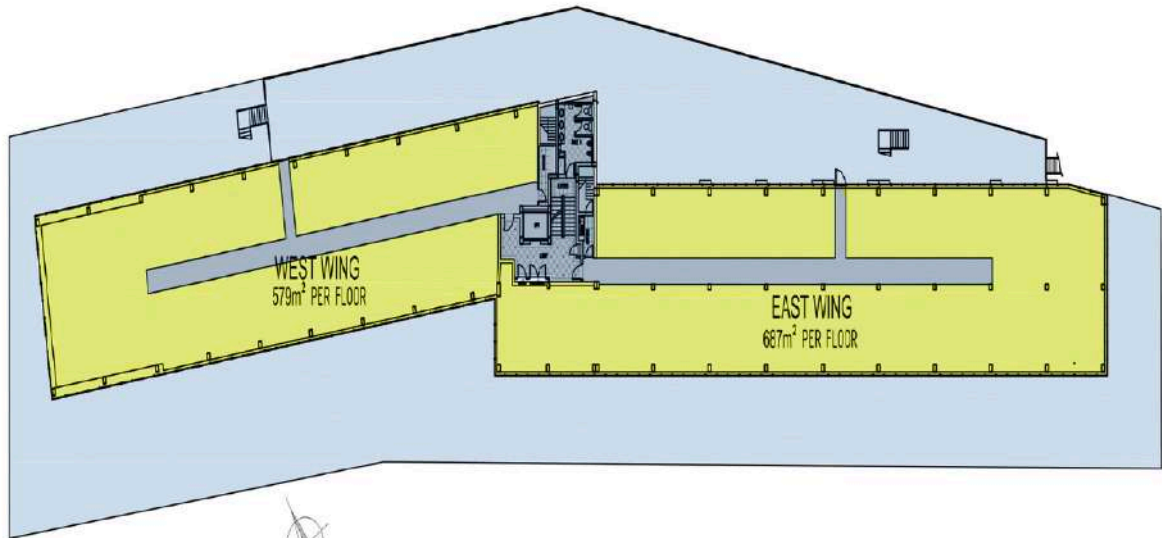
The undercover parking provides ample space for all tenants, clients and customers and a lift services all floors of the building providing easy access.

The Valley Centre houses a standby generator in the event of load-shedding or power outages, as well as a back-up water supply.

This secure office building has 24 hour security, CCTV and armed response, with controlled access to the building and offices.



Office Floor Plan & Site Map



Call us for more information
011 888 7878



Email us
info@urban.co.za



www.urbanrealestate.co.za
VISIT OUR WEBSITE

Gallery: Retail Spaces



Medical Suite Details

Are you a healthcare professional looking for a premier medical space to rent- in a prime location?

Our versatile Valley Centre Medical Suites are available in a bustling shopping centre, situated in the **prime location** of The Valley Centre which borders Hyde Park. With **competitive rental rates and comprehensive amenities**, The Valley Centre Medical Suites is the perfect place to establish your medical practice.

Why choose The Valley Centre Medical Suites for your practice?

- **Versatile Suites:** Our medical suites are designed to accommodate a range of healthcare specialties. Whether you're a psychologist, physiotherapist, dietician, paediatrician, sports medicine practitioner, Biokineticist, dermatologist, podiatrist, chiropractor, gerontologist, or any other medical professional, our suites provide the ideal environment for your practice. Benefit from well-designed spaces that cater to your unique needs and enhance the patient experience.
- **Prime Location:** Situated on the border of Hyde Park, The Valley Centre offers a coveted location without the steep price tag associated with Hyde Park. This means you can establish your practice in a prestigious area known for its affluent clientele while enjoying competitive rental rates. With excellent visibility and access from Jan Smuts Avenue, your medical suite will attract the attention of potential patients seeking top-quality healthcare services.
- **Comprehensive Amenities:** As part of a mixed-use retail and office building, The Valley Centre offers an array of amenities to enhance your practice. Anchored by renowned retailers Woolworths and Clicks, our centre provides a bustling environment that draws a steady flow of foot traffic. Additionally, enjoy the peace of mind that comes with 24-hour security and access control, ensuring a safe and secure environment for both you and your patients. Covered parking adds convenience and accessibility, while a backup generator ensures an uninterrupted power supply.



Don't miss this opportunity to establish your practice in a prime location at an affordable price. Join the prestigious community of healthcare professionals at The Valley Centre Medical Suites. Contact us now to secure your medical suite and take the first step toward a thriving practice in a sought-after location.



Call us for more information
011 888 7878

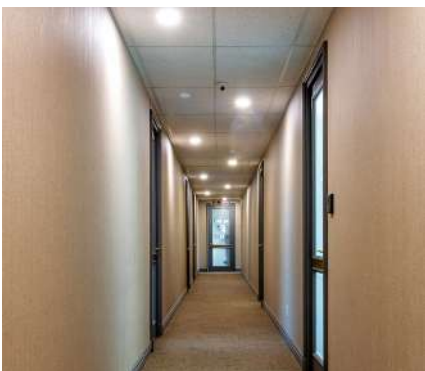


Email us
info@urban.co.za

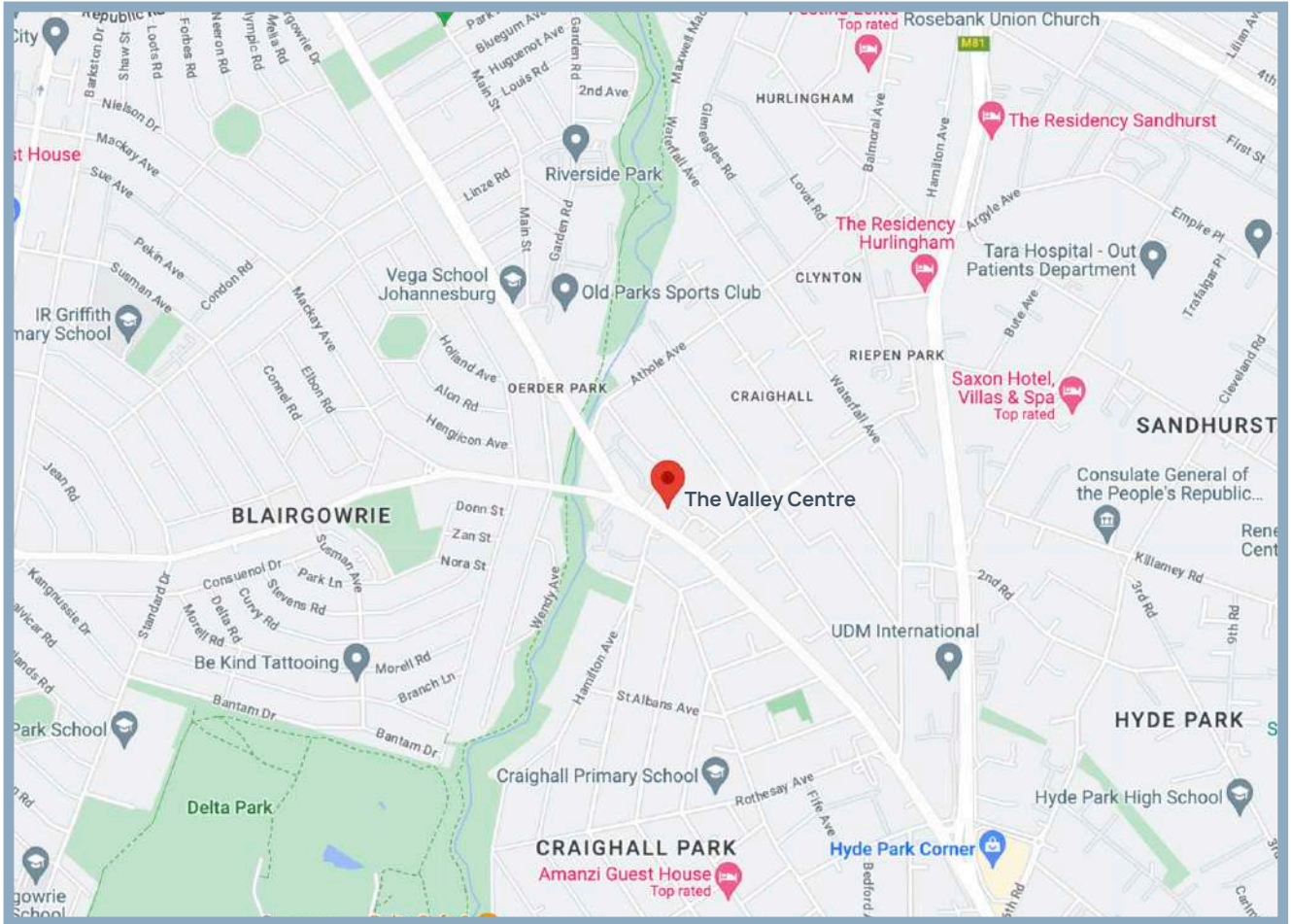


www.urbanrealestate.co.za
VISIT OUR WEBSITE

Gallery: Medical Suites & Offices



Location



Meeting Your Requirements

Our construction division will help with creating an area that will meet your exact requirements.



Reputable & Experienced

Our leasing, professional and construction teams are available to attend to your leasing needs.



Shops & Offices

We have an impressive range of shops and office space available at affordable rentals.



Contact Our Agents

If you have any questions regarding any of our properties, please do not hesitate to contact us.

We offer prime locations at unbeatable rentals.

